



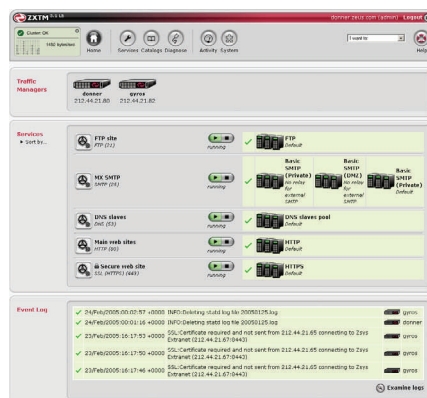
ZXSTM Load Balancer

Software Features and Technical Specifications

Entry-level load balancing solutions from Zeus

Ease of Use	<ul style="list-style-type: none"> • Secure, resilient, web-based GUI, including wizards to simplify common tasks • Simple, fast deployment with automatic ZXTM detection • Secure configuration replication within a ZXTM resilient cluster • Fully-customisable active application monitoring • SNMP support for easy integration into existing monitoring systems • Comprehensive, configurable logging • Automatic, event-triggered alerting
Flexible Configurations	<ul style="list-style-type: none"> • Grouping of related back-end servers into named pools • Traffic management parameters and actions defined on a per-pool basis • Wide choice of back-end fail-over configurations and actions • Straightforward back-end application partitioning for performance improvement of large-scale application server deployments
Load Balancing Rules	<ul style="list-style-type: none"> • Intuitive traffic inspection, manipulation and routing rules • Unlimited content inspection depth • Visual UI (RuleBuilder™) provides wizards for simple rule creation and configuration • Enables entire client requests and server responses to be analysed and rewritten • Enables business policies to be translated into traffic management actions • Enables traffic management decisions to be made based on traffic origin, destination, content type or any part of the request content • Applicable to all TCP/UDP protocols • Rich logical expressions allow modelling of complex routing decisions • Rules stored in the Catalog for easy deployment to multiple virtual servers
Server Load Balancing	<ul style="list-style-type: none"> • Layer 7 load balancing • Selectable load-balancing algorithms and parameters on a per-pool basis • Load-balancing algorithms include: round-robin, weighted round-robin, least connections, fastest response time, random, perceptible • Cache affinity load-balancing algorithms • Slow start for server introduction / reintroduction • Connection draining for removing servers from cluster non-disruptively
Applications Supported	<ul style="list-style-type: none"> • All web-based applications, email, FTP (active and passive), SQL databases, directory servers, RADIUS, BEA WebLogic, IBM WebSphere, JBoss, JRun, .NET, RealServer, Windows Media Streaming Server, many others
Protocols Supported	<ul style="list-style-type: none"> • All TCP and UDP protocols including any SSL-wrapped protocol
Front-end Fail-over and Scalability	<ul style="list-style-type: none"> • Resilient active / active and active / standby pairs • Protection from hardware failures • Resilient session management
Back-end Fail-over	<ul style="list-style-type: none"> • Reroutes requests away from overloaded or unavailable servers to healthy servers with available capacity, ensuring network problems are invisible to end-users • Predefined and customisable per-service, per-pool and per-machine fail-over actions • Configurable failure pools allow traffic to be directed to alternative back-end machines when those in the current pool have all failed • Pool prioritisation ensures there is always enough capacity to service demand
Session Persistence	<ul style="list-style-type: none"> • Wide choice of predefined and customisable stateful session persistence methods • Full support for HTTP- and SSL-specific session persistence methods • Full support for protocol-independent session persistence methods • Automatic detection determined when session persistence is needed and dynamically sets up cluster-aware persistence • Supports clustering of applications such as BEA WebLogic, IBM WebSphere, Oracle 9i and many others • Ensures that legacy applications can be deployed safely in a fault-tolerant cluster

Application Acceleration	<ul style="list-style-type: none"> • Unique connection handling takes load away from back-end servers and applications, removing the overhead of handling sessions with slow clients • Accelerates application servers such as BEA WebLogic, IBM WebSphere by as much as 10x • On-the-fly content compression applied to any compressible content type
SSL Termination	<ul style="list-style-type: none"> • Over 4,500 native SSL transactions per second on dual AMD Opteron server • SSL decryption takes load away from back-end servers • SSL re-encryption (back-end encryption) for end-to-end security • Integrated 64-bit high performance SSL removes necessity for additional hardware cryptographic accelerators • Allows traffic management intelligence and load balancing to be applied to encrypted traffic • Filters encrypted traffic for malicious content, web viruses and application security attacks • Centralised client certificate authentication, management and revocation
Performance Monitoring	<ul style="list-style-type: none"> • Customisable, real-time performance monitoring of both ZXTM LB and back-end infrastructure • ZXTM LB takes account of server and application performance in routing decisions • Real-time traffic visualisation and trending via GUI and SNMP • Performance data available through SNMP
Health Monitoring	<ul style="list-style-type: none"> • Predefined and customisable active application health monitors • Continually monitors the health and status of ZXTMs and back-ends, including applications and services behind the servers which communicate with ZXTM directly • Traffic manager takes account of server and application health in routing decisions • Requests automatically diverted away from unhealthy servers • Recovered servers automatically and gradually reintroduced • Flexible configuration of health monitoring frequency • Monitors can trigger alerts and pre-defined actions when server is classed as unhealthy
Content and Application Verification	<ul style="list-style-type: none"> • Server response verification to detect error codes or other specified data in responses • Traffic manager takes account of response validity in routing decisions
Service Protection	<ul style="list-style-type: none"> • Protection against Denial of Service and Distributed Denial of Service attacks • Protection against Web worms and viruses • Protection against malformed URL attacks • Protection against XML-based application attacks • Access restrictions for specific IP addresses or ranges of IP addresses • Real-time monitoring, threat analysis reporting, and alerting • Configuration allows fine-tuning of service protection, including test and debug modes • TrafficScript service protection rule enables custom actions to be taken • Connection limiting • Extensive, configurable, attack logging



ZXTM Load Balancer provides you with an intuitive and SSL-secured Web-based user interface



z e u s

Zeus develops application traffic management software and appliance solutions.
 We dramatically improve network and web-enabled applications,
 making them fast, reliable, secure and easy to manage.

Software Specifications

Product name	ZXTM Load Balancer	Zeus Extensible Traffic Manager
Scalability:		
Active/Active and Active/Passive	Yes	Yes
TrafficCluster™ size	Up to 2 active ZXTM LB units	Up to 64 active ZXTM units
Application cluster size	4, 12 or unlimited back-end IP addresses	Unlimited back-end IP addresses
Load Balancing:		
Supported protocols	All TCP and UDP protocols: HTTP, HTTPS, SOAP, FTP, Mail, DNS etc.	
Layer-7 load balancing	Yes	Yes
Session persistence	Yes	Yes
SSL decryption and encryption	Yes	Yes
Application Acceleration	Yes	Yes
Service Protection	Yes	Yes
Application Health monitoring	Yes	Yes
Traffic Management:		
Application traffic rules	RuleBuilder™	RuleBuilder™ and TrafficScript™
Entire request and response control	n/a	Yes
Content Caching	n/a	Included as standard
Service Level Monitoring	n/a	Included as standard
Bandwidth Management	n/a	Included as standard
Request Rate Shaping	n/a	Included as standard
XML / XPath / XSLT	n/a	Included as standard
Control API	n/a	Included as standard
FIPS level 3 cryptography	Optional	Optional
Software warranty	Standard or premium	Standard or premium
Supported platforms	Standard servers, blades and virtual environments; x86 32/64bit, SPARC	

Specifications are subject to change without notice

Zeus Technology Limited (UK) Sales: +44 (0)1223 568555
 The Jeffreys Building Main: +44 (0)1223 525000
 Cowley Road Fax: +44 (0)1223 525100
 Cambridge CB4 0WS Email: info@zeus.com
 United Kingdom Web: <http://www.zeus.com/>

Zeus Technology, Inc. (U.S.) Phone: (650) 965-4627
 1955 Landings Drive Fax: (866) 628-7884
 Mountain View Email: info@zeus.com
 CA 94043 Web: www.zeus.com
 United States of America

© Zeus Technology 2006. Zeus Technology, the Zeus logo, Zeus Web Server, Zeus Extensible Traffic Manager, TrafficScript, TrafficCluster and RuleBuilder are trademarks of Zeus Technology Limited. Other trademarks may be owned by third parties.